

Pads, Shop Space, & Hotel Site

7 Acre Development | 172nd & Interstate 5

AERIAL MAP



LAKEWOOD POINTE CENTER

Project Details

Available: Pads, Medical, Shop Space

Major Retailers: Target, CostCo, Best Buy, Michael's Crafts, PetCo

Location Proximity: Marysville, WA
45 miles N. of Seattle, WA/Everett,
WA is 7 miles to the South -
Marysville 172nd & I-5

Demographics

POPULATION	1 MILE	3 MILE	5 MILE
2009 Estimated	3,082	21,705	52,017
2013 Projected	3,360	23,824	56,600

HOUSEHOLDS	1 MILE	3 MILE	5 MILE
2009 Estimated	1,226	7,865	18,884
2013 Projected	1,368	8,796	20,868

CURRENT	1 MILE	3 MILE	5 MILE
Average Income	\$63,719	\$76,342	\$77,841
Median Income	\$67,633	\$75,125	\$75,283

Traffic Counts

I-5 at 172nd St: 73,000 (2006)
172nd St N.E.: 20,500

(represents 2-way traffic)

Additional Information

Situated at the Northern entrance to the Lakewood Crossings Power Center which includes Costco, Target, Best Buy, Michael's Crafts, PetCo, Burger King and more. The Everett Clinic has chosen this site for its Northern Marysville expansion. Pad sites available at the signalized intersection. I-5 frontage available.



White-Leasure
DEVELOPMENT COMPANY

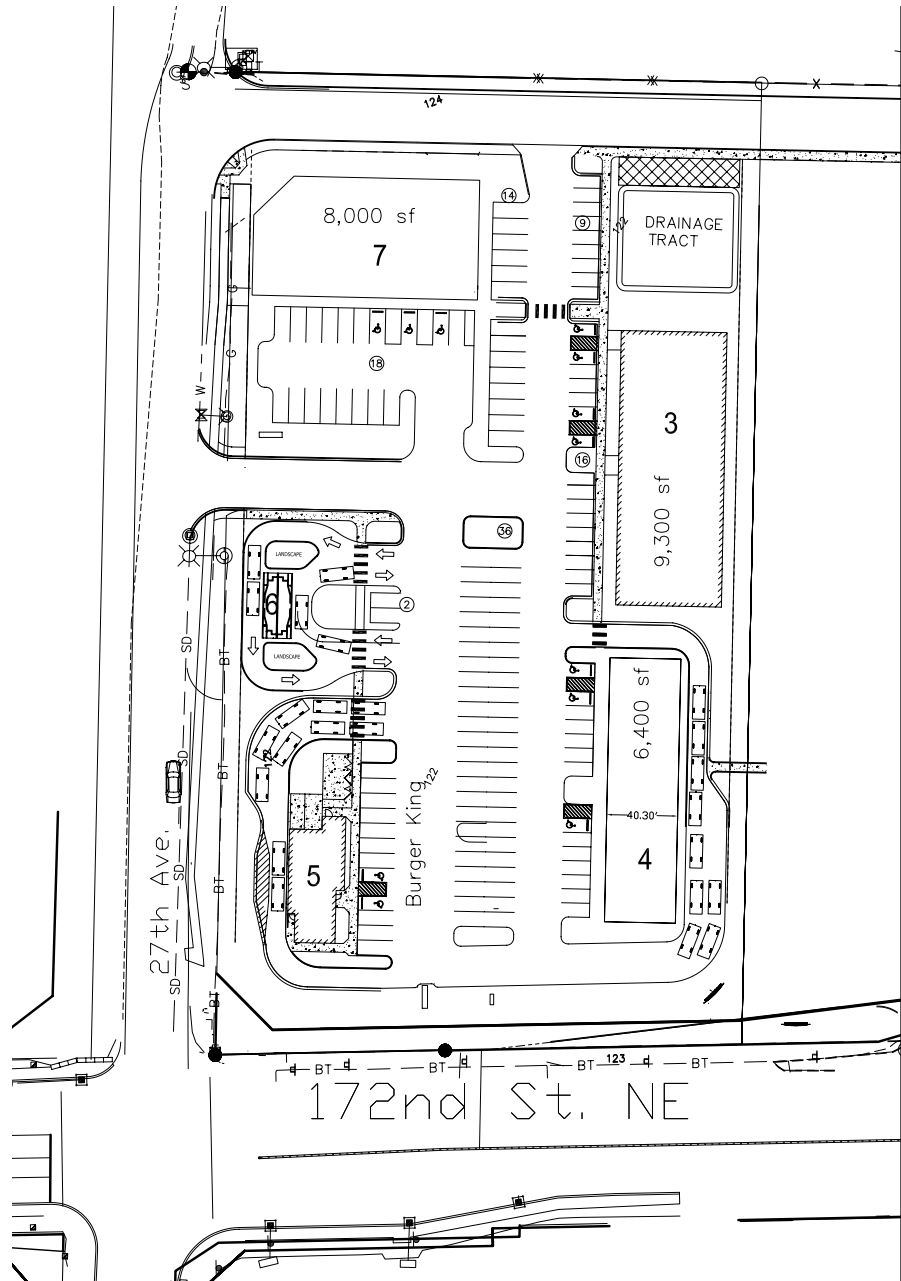
Wayne Green
VP - NW Region
253.858.8326
wgreen@white-leasure.com

Jason White
VP Marketing
208.345.1842 x208
jasonwhite@white-leasure.com

Pads, Shop Space, & Hotel Site

7 Acre Development | 172nd & Interstate 5

SITE PLAN



White-Leasure
DEVELOPMENT COMPANY

Our Mission:

Provide the foundation to transform real estate concepts into successful community assets.

The information contained herein has been obtained from reliable sources but is not guaranteed.