

GATEWAY SHOPPING CENTER STOCKTON, CALIFORNIA



I-5 & 8th Street

Project Details

- Proposed 20 acre community shopping center
- Located in the fast growing city of Stockton, CA
- Excellent exposure on Interstate 5

Traffic Counts

Population	1 Mi	3 Mi	5 Mi
2004 Estimated	21,528	100,730	199,335
2000 Census	17,973	86,056	172,832
2009 Proected	25,866	118,261	230,508
Projected Annual Growth			
2004 - 2009	4%	3.5%	3.1%

Prepared 2/2005

Demographics

Population	1 Mi	3 Mi	5 Mi
2004 Estimated	21,528	100,730	199,335
2000 Census	17,973	86,056	172,832
2009 Proected	25,866	118,261	230,508
Projected Annual Growth			
2004 - 2009	4%	3.5%	3.1%

Prepared 2/2005

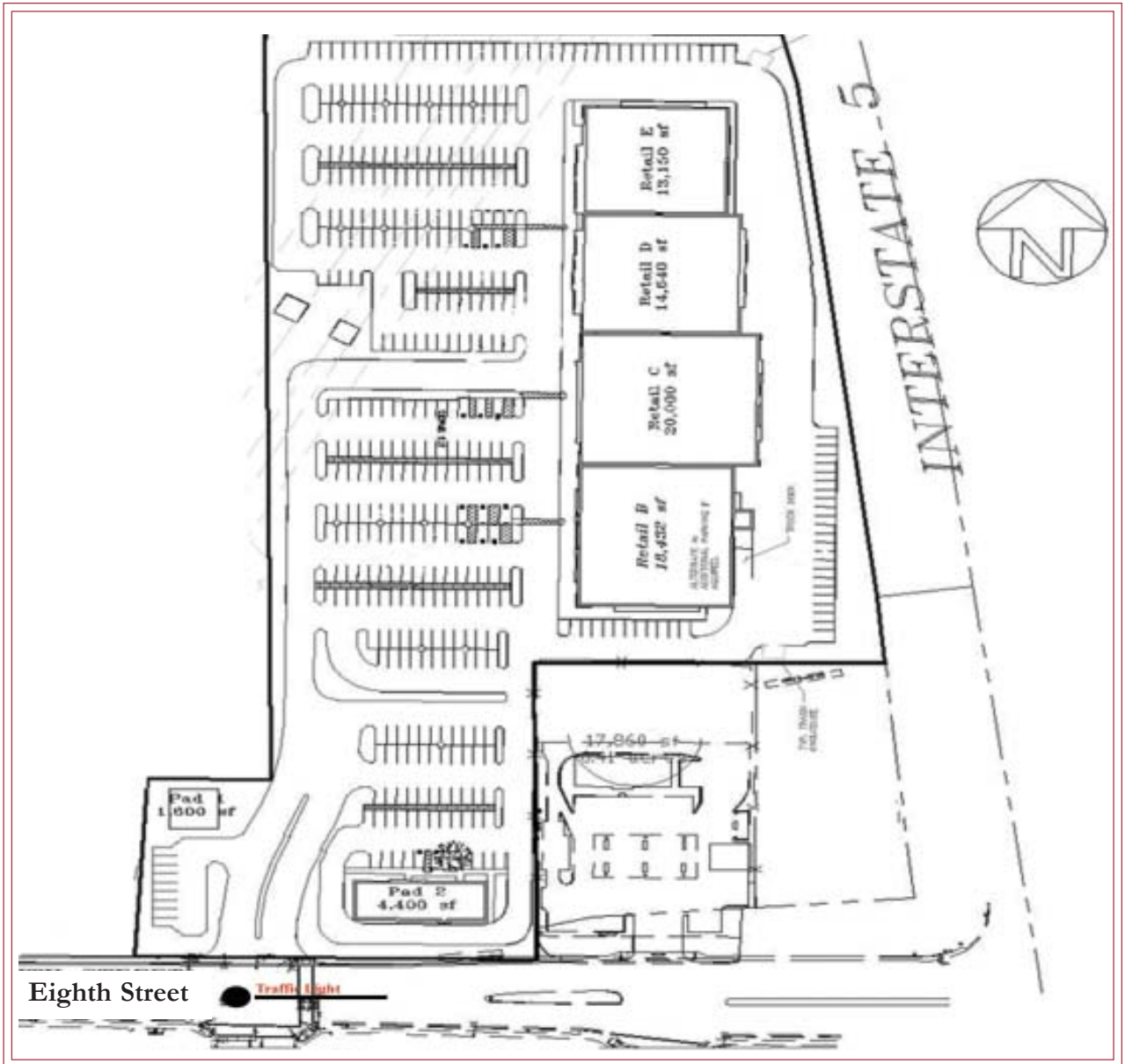
JASON WHITE
Vice President - Marketing
(208) 345-1842 Ext. 208
jasonwhite@white-leasure.com



**WHITE-LEASEURE
DEVELOPMENT COMPANY**

416 South 8th Street · Suite 200 · Boise, Idaho 83702
(208) 345-1842 · (800) 953-2338 · (208) 343-3143 fax
www.white-leasure.com

SITE PLAN



Site Information

	Building Area (SF)	Lot Size (SF)	Lot Size (Acres)
Retail B	18,432	321,600	7.4
Retail C	20,000	In "B"	
Retail D	14,640	In "B"	
Retail E	13,150	In "B"	



416 South 8th Street · Suite 200 · Boise, Idaho 83702
(208) 345-1842 · (800) 953-2338 · (208) 343-3143 fax

www.white-leasure.com

Contact: Jason White
Phone: (208) 345-1842 Ext. 208
Fax: (208) 343-3143
jasonwhite@white-leasure.com

The information above has been retained from sources believed reliable. While we do not doubt its accuracy, we have not verified it and make no guarantee, warranty, or representation about it. It is your responsibility to confirm its accuracy and completeness. Any projections, opinions, assumptions or estimates used are for example only and do not represent the current or future performance of the property. The value of this transaction to you depends on other factors which should be evaluated after careful investigation by your advisors.